



# Dream Homes

1, 2 & 3 BHK mid-rise residential apartments

RERA Promoter's Reg. No. UPRERAPRM5538  
RERA Project Reg. No. UPRERAPRJ3964  
Sanctioned Date & No.: 14.07.2014 & 410/zone-5/2013-14

**WAVE**  
**City**

*The city that thinks for you*



# Dream Homes









Owning a home is a dream for everyone, but only a select few get to realise it. Wave City presents Dream Homes, your opportunity to own your Dream Haven! Located in Sec-05, Greenwood Enclave, Wave City, Dream Homes are 1, 2 & 3 BHK residential apartments with sizes ranging from 35.05-64.94 sq. m. It is a marvellous example of how meticulous planning and futuristic thinking can be put together to bring dreams to reality.

With features like dedicated clubhouse and facilities like swimming pool, community hall, large open and green spaces and ISKCON temple in vicinity, Dream Homes will take community living to the next level.

Come, be a part of this Urban Lifestyle and realise your dream of a home while enjoying the benefits of state-of-the-art Wave City.

## DREAM HOMES FEATURES

<p>Swimming Pool</p>	 <p>*Artistic Image</p>	<p>Elevators</p>	 <p>*Artistic Image</p>
 <p>*Artistic Image</p>	<p>Power Backup</p>	 <p>*Artistic Image</p>	<p>Mid-rise living</p>
<p>Large and Open Green Space</p>	 <p>*Artistic Image</p>	<p>Club House</p>	 <p>*Artistic Image</p>

# SPECIFICATIONS

## STRUCTURE

R.C.C. framed structure, earthquake resistant

---

## LIVING / BEDROOM

- Walls** : **Internal:** Oil bound distemper  
**External:** Good quality external grade textured paint/ external grade paint
- Floors** : Vitrified ceramic tiles
- Doors** : **External Doors – Main Entrance Door:** Wooden frame, shutters: pre-laminated flush doors  
**Other External Doors:** Aluminium glazed sliding or openable shutters
- Windows** : **External Windows:** Aluminium glazed windows  
**Window Fittings:** Anodised aluminium, bolt sizes 4" to 6"
- 

## KITCHEN

- Walls** : Ceramic tiles 2' - 6" above counter, balance walls painted in oil bound distemper
- Floors** : Vitrified tiles
- Fixture and Fittings** : Stone top with sink (single bowl), standard CP fittings
- 

## BATHROOM / TOILET

- Walls** : Ceramic tiles in cladding up to 7' in shower area and 4' - 6" in balance areas, balance walls painted in oil bound distemper
- Floors** : Ceramic tiles non-skid type
- Doors** : Skin doors
- Fixture and Fittings** : Standard company make WC wall mounted/ floor mounted, washbasin, CP fittings
- 

## BALCONY / VERANDAH

- Floors** : Ceramic tiles
- Railings** : MS railing as per design
- 

## CEILING

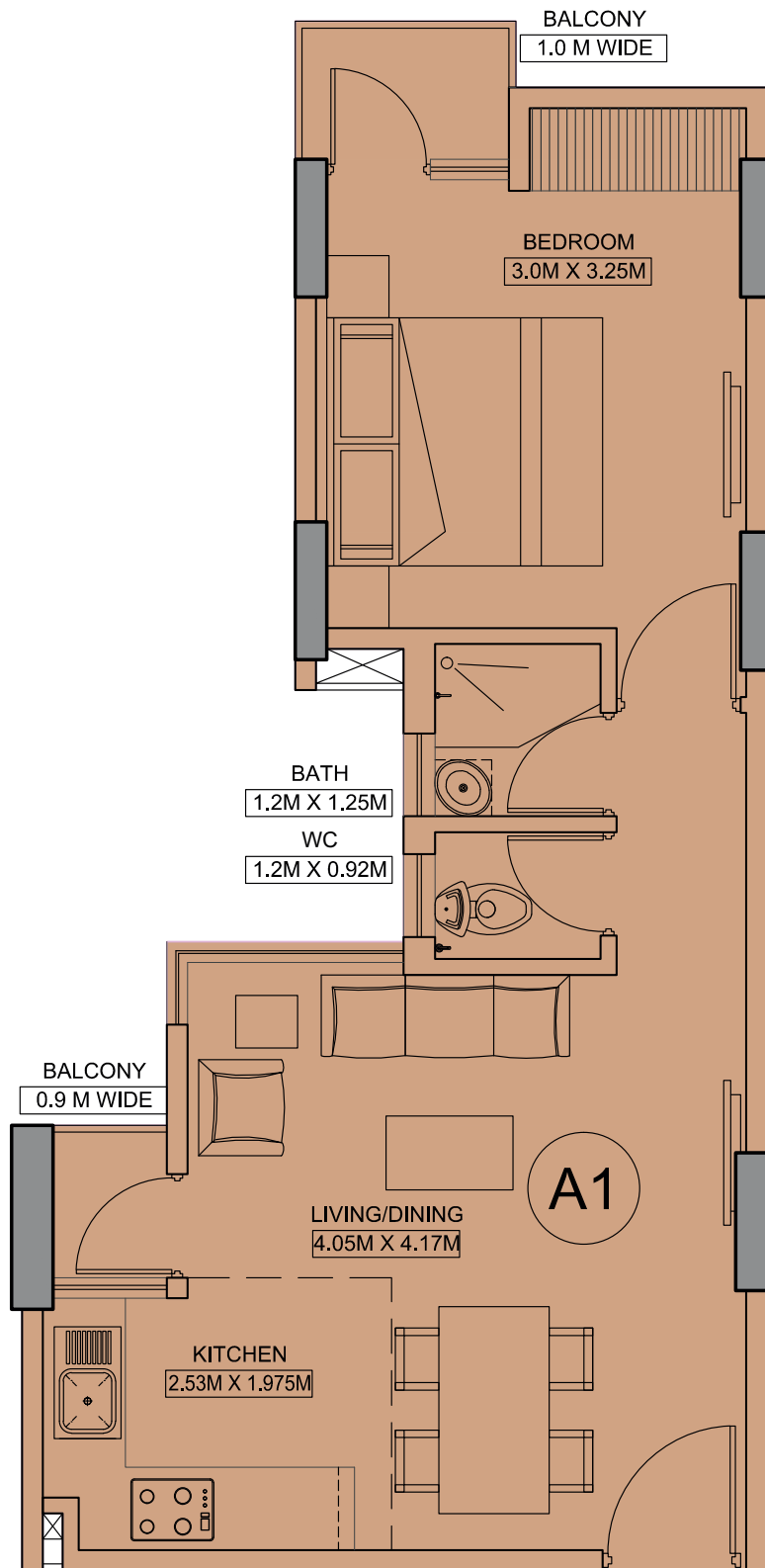
Whitewash

---

## ELECTRICAL

PVC concealed conduits  
Copper wiring  
Power Backup: 1 KVA load per apartment

# Dream Homes - 1 BHK typical floor plan



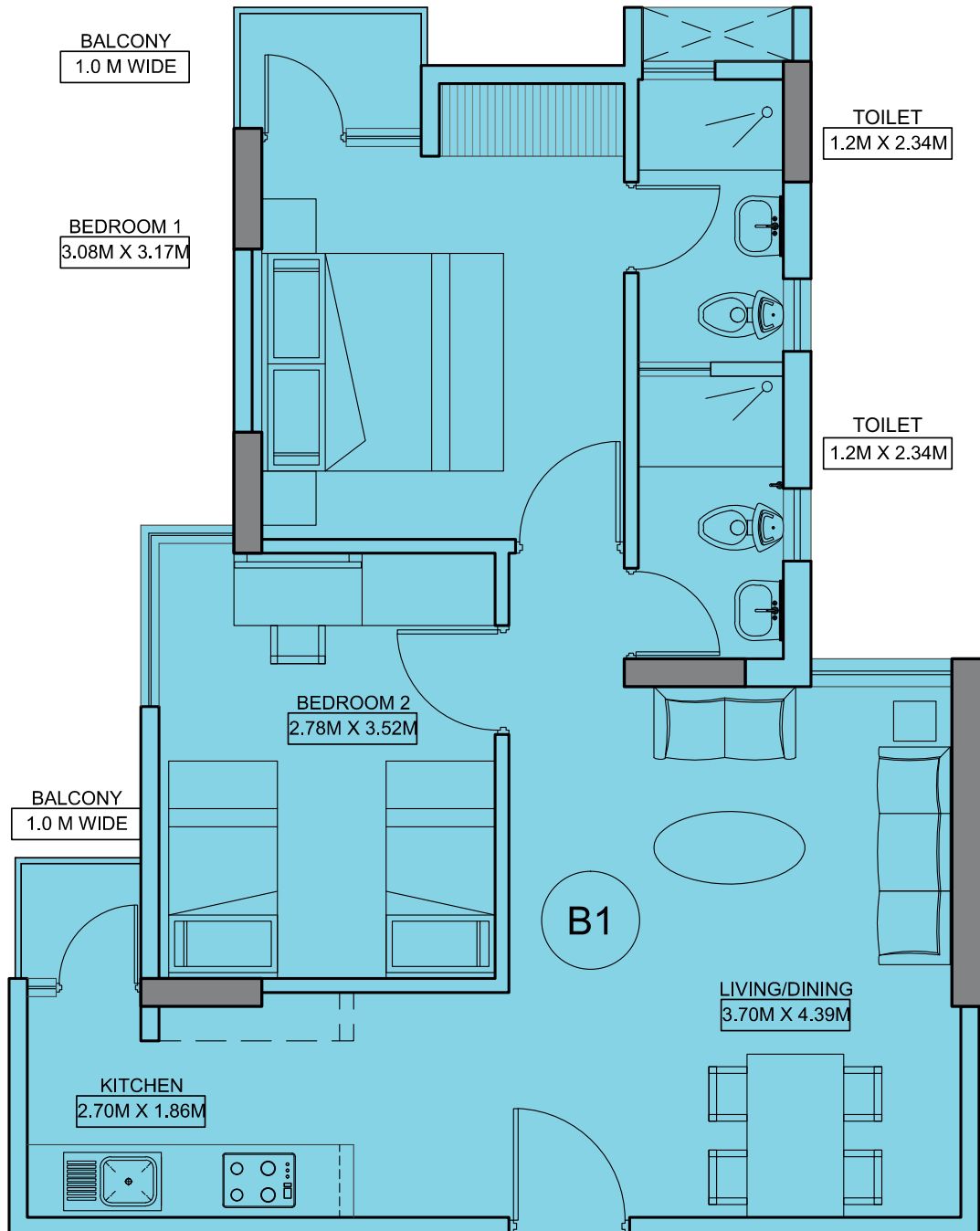
## Unit: 1 BHK

Carpet Area: 35.05 sq. m./ 377.28 sq. ft.

Balcony Area: 2.68 sq. m./ 28.85 sq. ft.

(1 sq. m. = 10.764 sq. ft.)

# Dream Homes - 2 BHK typical floor plan



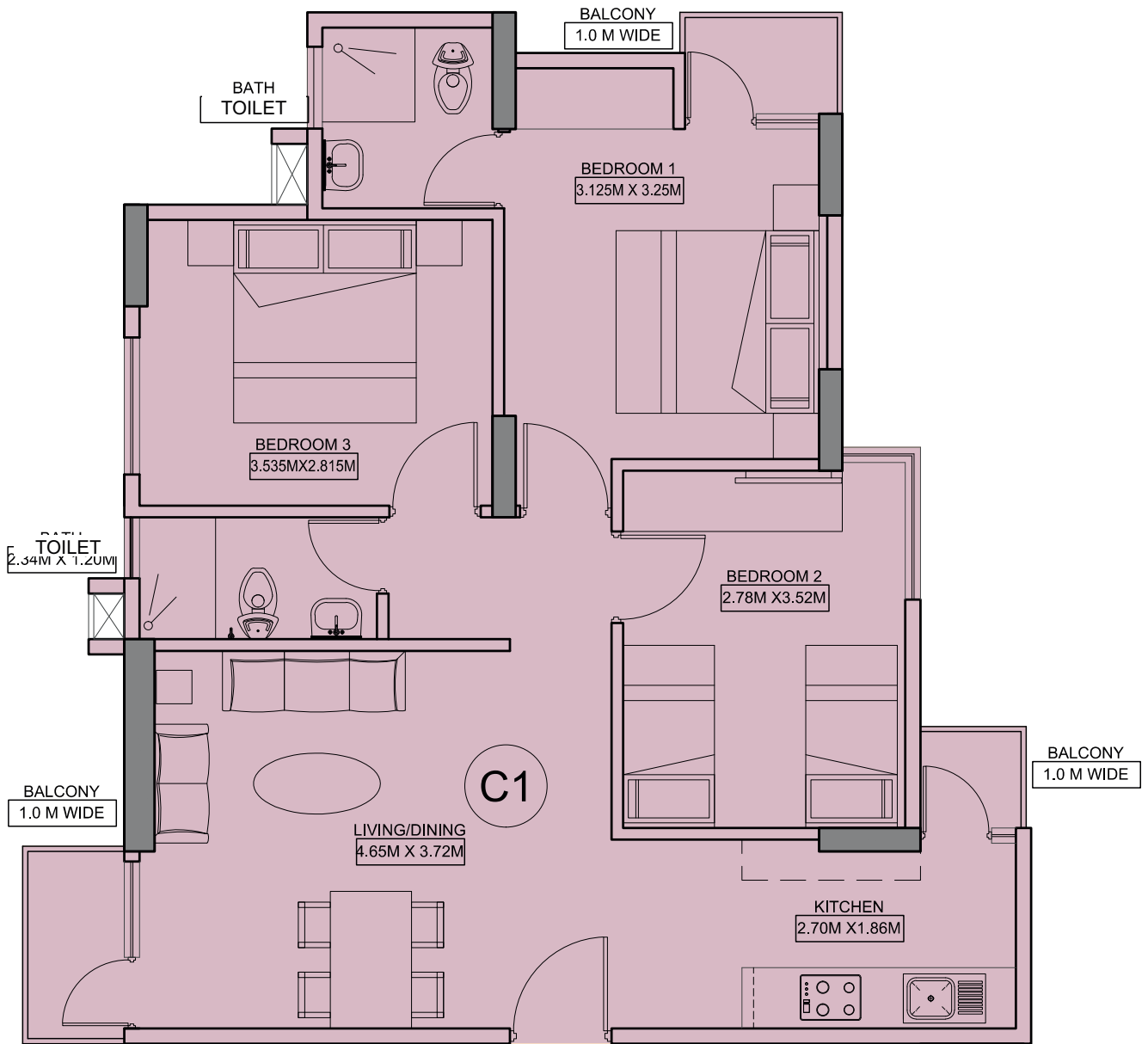
## Unit: 2 BHK

Carpet Area: 51.82 sq. m./ 557.79 sq. ft.

Balcony Area: 2.61 sq. m./ 28.09 sq. ft.

(1 sq. m. = 10.764 sq. ft.)

# Dream Homes - 3 BHK typical floor plan



## Unit: 3 BHK

Carpet Area: 64.94 sq. m./ 699.01 sq. ft.

Balcony Area: 4.60 sq. m./ 49.51 sq. ft.

(1 sq. m. = 10.764 sq. ft.)

# WAVE City

The city that thinks for you

Wave City - A first of its kind project that truly personifies the concept of creating a city that thinks for you. Spread over an impressive landscape adjacent to National Highway 24, Wave City is one of India's largest Hi-Tech City based on "Hi-Tech City Concept". Undertaken and promoted by "Uppal Chadha Hi-Tech Developers Pvt. Ltd.", the project focuses on creating an entirely new way of living with contemporary infrastructure and facilities. The city promises to offer a nurturing environment to its residents and is being developed to provide an entirely new living experience that will be unparalleled.

This mixed-use destination focuses on quality construction, keeping in mind the contemporary design and new-age architecture. With the luxury of green open spaces and modern infrastructure designs, the city ensures a pampered, secure and luxurious lifestyle to its inhabitants.

## Wave City - Salient Features

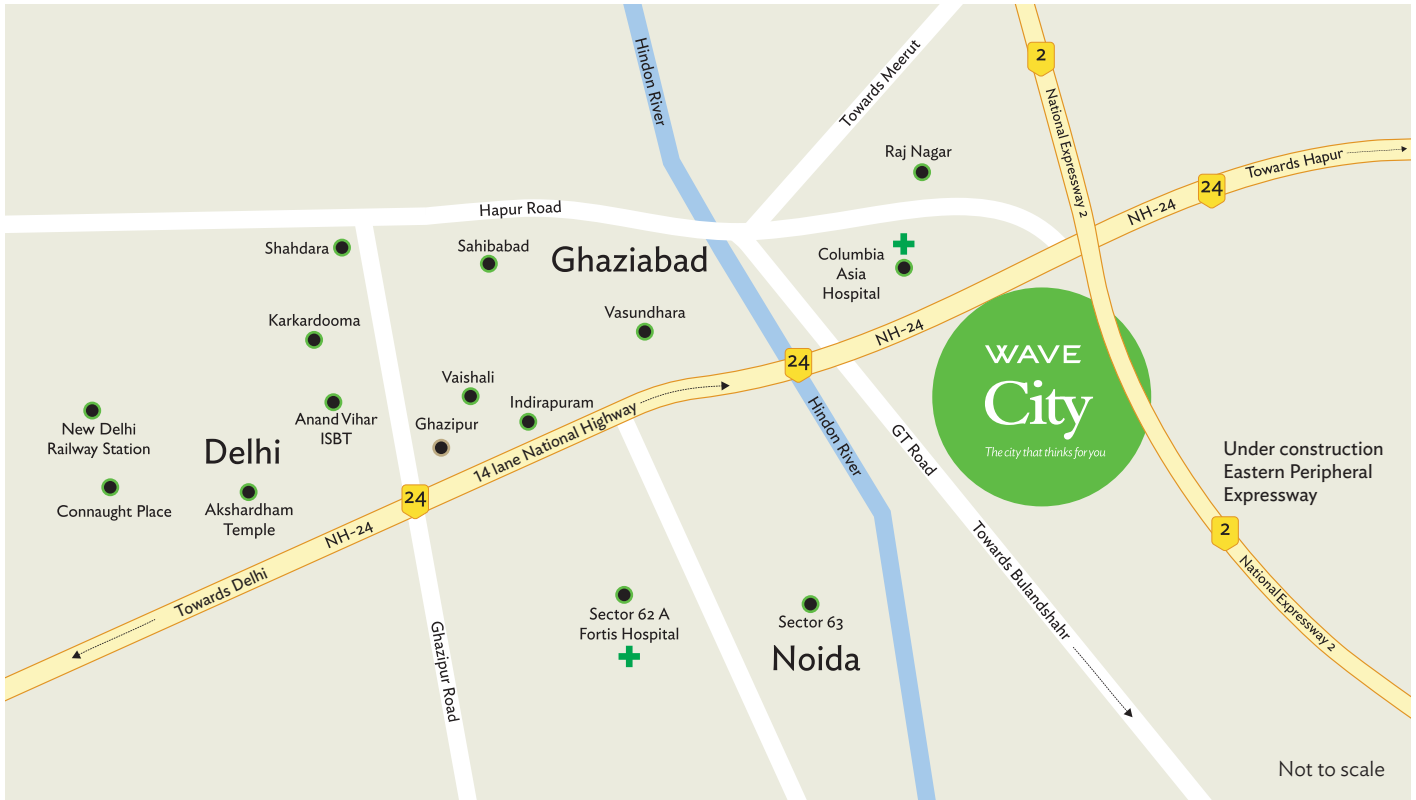
- Spread over huge expanse, first phase under development
- Hi-Tech and contemporary features
- Strategically located on NH 24, the newest suburb of Delhi
- Wide array of products: Residential, Plots, Independent Floors, Villas, Group Housing, Commercial, etc.
- Excellent intra-city road network for congestion free and smooth traffic movement
- Large green spaces spread across the city
- Educational Institutes, Health, Sports facilities, etc. within the city
- Neighbourhood facilities & amenities
- GPS Enabled Intra-city transport facility

## SMART FEATURES





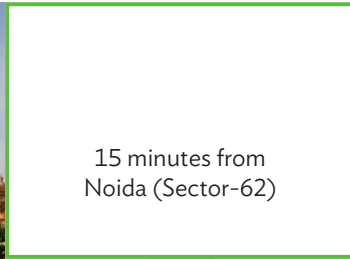
# Wave City Smart Location



## Location advantages



30 minutes from  
Akshardham Temple



15 minutes from  
Noida (Sector-62)



10 minutes from 8 lane  
Delhi - Meerut  
Expressway



5 minutes from the  
nearest proposed  
Metro Station



## Consultants

Master Planning, Landscape &  
Infrastructure Development

**AECOM**

IGBC Pre-certified  
Platinum Rated Township





**IGBC Pre-certified Platinum Rated Green Township.**

**Dream Homes, Wave City, NH 24, Newest Suburb of Delhi**

**Sales Office: Wave City Sales Pavilion, Sardar Kulwant Singh Chadha Marg, NH 24, Uttar Pradesh-201015 | Website: [www.wavecity.in](http://www.wavecity.in)**

**Project Location: Dream Homes, Sector-5, Greenwood Enclave, Wave City, NH 24 | Website: [www.wavecity.in/dreamhomes](http://www.wavecity.in/dreamhomes)**

**Toll Free No.: 1800 102 3950 | Email: [customercare@wavecity.in](mailto:customercare@wavecity.in) | RERA Website: [www.up-rera.in](http://www.up-rera.in)**